

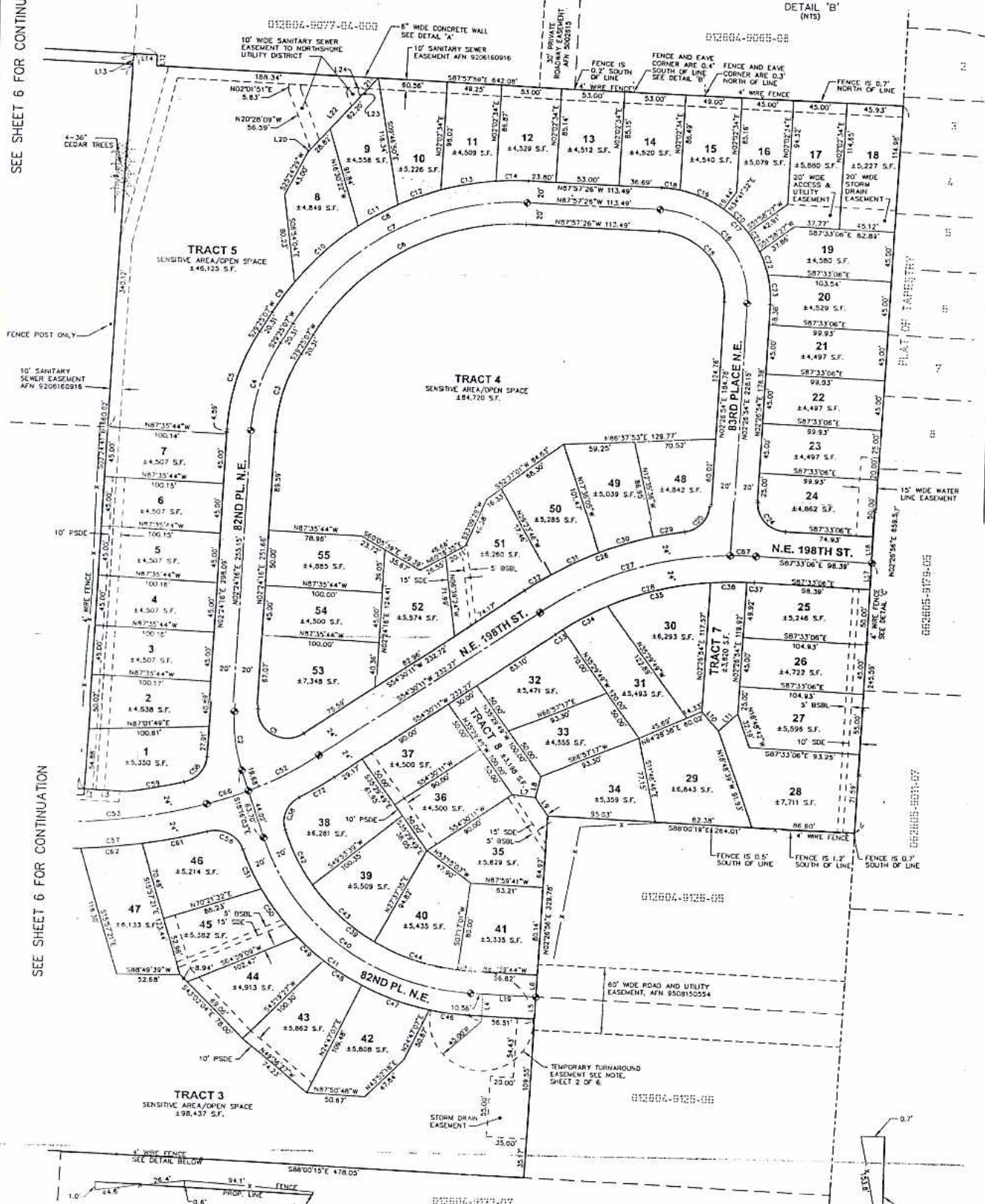
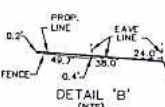
BRIDLEPATH

NE 1/4, SEC. 1, TWP. 26 N, RGE. 4 E, W.M.
CITY OF KENMORE, KING COUNTY, WASHINGTON

VOL/PG

SEE SHEET 6 FOR CONTINUATION

SEE SHEET 6 FOR CONTINUATION



CURVE TABLE			
CURVE	LENGTH	RADIUS	DELTA
C1	55.81	25.00	127.2405°
C2	84.12	150.00	20.4019°
C3	75.44	180.00	27.0026°
C4	84.87	180.00	27.0026°
C5	84.30	300.00	27.0021°
C6	224.00	200.00	82.2747°
C7	245.51	225.00	82.2747°
C8	267.79	245.00	82.2747°
C9	78.28	245.00	17.3527°
C10	32.52	245.00	7.3717°
C11	40.05	245.00	9.2154°
C12	40.04	245.00	9.2153°
C13	30.59	245.00	11.4849°
C14	39.25	245.00	13.9778°
C15	44.67	245.00	16.3637°
C16	126.23	80.00	92.2419°

C36	36.11	275.00	81.5000°
C37	6.54	275.00	12.7128°
C38	34.17	275.00	26.1830°
C39	220.27	180.00	20.0646°
C40	243.40	200.00	69.4341°
C41	262.48	200.00	69.2176°
C42	55.44	180.00	17.3647°
C43	73.02	180.00	23.5243°
C44	78.87	180.00	24.7414°
C45	131.14	180.00	43.1037°
C46	35.34	220.00	9.7209°
C47	52.90	220.00	18.2250°
C48	46.08	220.00	19.2250°
C49	30.13	220.00	12.8279°
C50	54.00	220.00	14.0250°
C51	39.09	220.00	10.1098°
C52	89.37	300.00	12.3146°
C53	15.19	300.00	12.3146°

LINE TABLE		
LINE	LENGTH	BEARING
L1	12.50	S88°00'19"E
L2	5.25	N09°24'41"E
L3	34.73	S88°00'19"E
L4	25.00	N02°00'16"E
L5	25.00	N02°00'16"E
L6	20.00	N02°00'16"E
L7	20.00	N89°36'51"W
L8	18.68	S34°32'15"E
L9	22.38	N109°36'51"W
L10	22.38	N44°32'30"E
L11	10.00	S02°24'40"W
L12	10.00	S02°24'40"W
L13	20.00	S87°57'59"E
L14	10.00	S02°24'40"W
L15	10.00	S02°24'39"W

